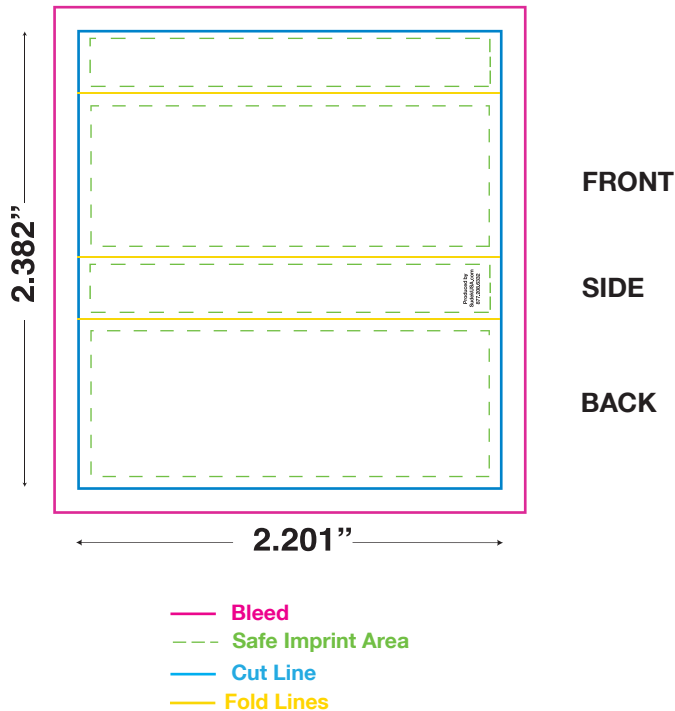


## Box tootpicks style 4000

All measurements are in inches

\*\*\*Possible movement of 1 to 2 mm (3/64" to 5/64"), in any direction, during the cutting process.\*\*\*



Please specify Pantone colors below.

**Our domestic factory will convert your colors to CMYK and match as close as possible your spot colors**

<input type="text"/>	PMS	<input type="text"/>	PMS	<input type="text"/>	CMYK
<input type="text"/>	PMS	<input type="text"/>	PMS		

### Box paper stock finish

- ☐ 1. Glossy (Coated) - PMS C colors
- ☐ 2. Matte (Flopped Stock Uncoated) - PMS U colors
- ☐ 3. Glossy with Matte Varnish  
(additional charge) - PMS C colors

### IMPORTANT NOTICE:

The colors appearing on this PDF proof are not color-calibrated but represent the colors to be used on press. If there is anything wrong with these colors, do not approve this proof. Please check and double-check this proof: all colors, graphics, copy, punctuation, and spelling. It is only to be approved if all elements of your job are absolutely correct. Final correctness is your sole responsibility. Once you have approved this proof Sudek USA Inc. will not be responsible for any omissions, oversights, or errors.

DATE:	
SIGNATURE:	
PRINT NAME:	
POSITION:	

Purchase 3 or more different logo products at the same time and receive a 5% discount, order 5 or more products and receive a 10% discount.