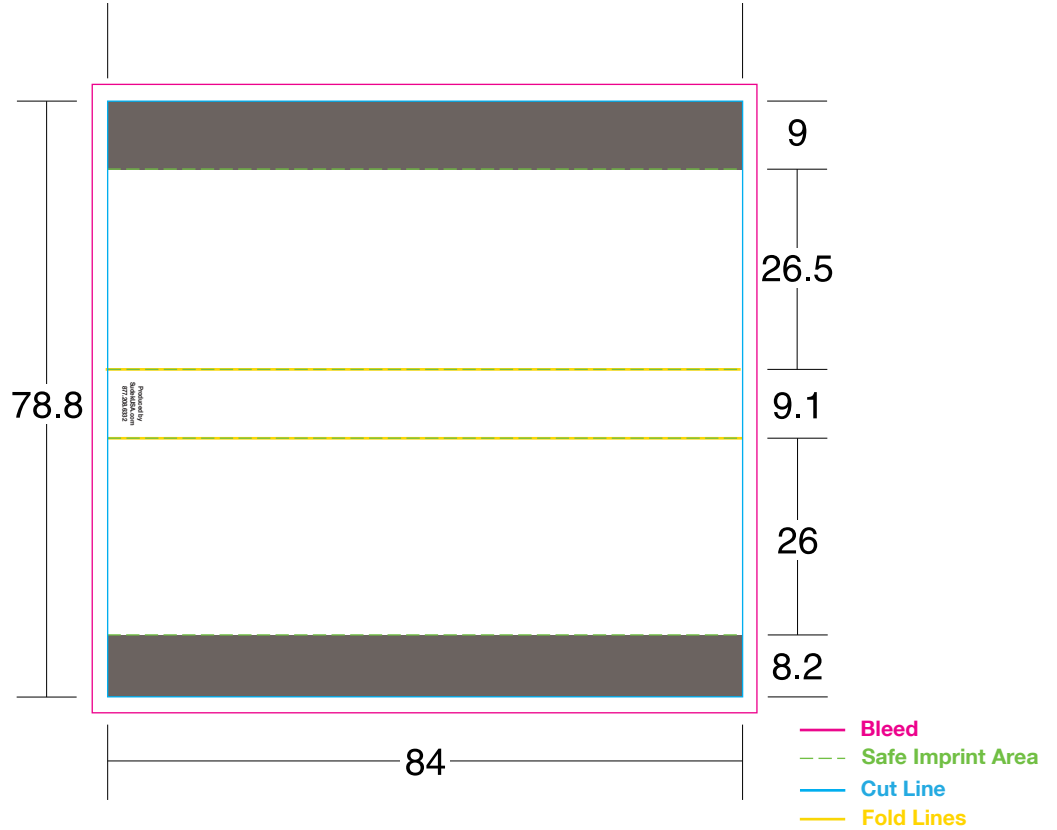


Matchbox Style 1018-3L IN
All measurements are in millimeters

*****Possible movement of 1 to 2 mm (3/64" to 5/64"), in any direction, during the cutting process.*****

Approximate stock match tip colors

- | | |
|--|--|
|  Black |  White |
|  Dark Green
PMS 357 |  Dark Pink
PMS 813 |
|  Light Green
PMS 355 |  Orange
PMS 151 |
|  Rust
PMS 1675 |  Yellow
PMS 012 |
|  Dark Brown
PMS 1545 |  Cyan |
|  Burgundy
PMS 209 |  Dark Blue
(Reflex Blue) |
|  Deep Blue
PMS 289 |  Lavender
PMS 2655 |
|  Purple
PMS 2592 |  Red
PMS 032 |



IMPORTANT NOTICE:

The colors appearing on this PDF proof are not color-calibrated but represent the colors to be used on press. If there is anything wrong with these colors, do not approve this proof. Please check and double-check this proof: all colors, graphics, copy, punctuation, and spelling. It is only to be approved if all elements of your job are absolutely correct. Final correctness is your sole responsibility. Once you have approved this proof Sudek USA Inc. will not be responsible for any omissions, oversights, or errors.

DATE:	
SIGNATURE:	
PRINT NAME:	
POSITION:	

Please specify Pantone colors below

<input type="text"/>	PMS	<input type="text"/>	PMS	<input type="text"/>	CMYK
<input type="text"/>	PMS	<input type="text"/>	PMS		

List Matchtip color below

Matchbox Finish

- 1. Glossy (Coated) - PMS C colors
- 2. Glossy with Matte Varnish (additional charge) - PMS C colors

Purchase 3 or more different logo products at the same time and receive a 5% discount, order 5 or more products and receive a 10% discount.