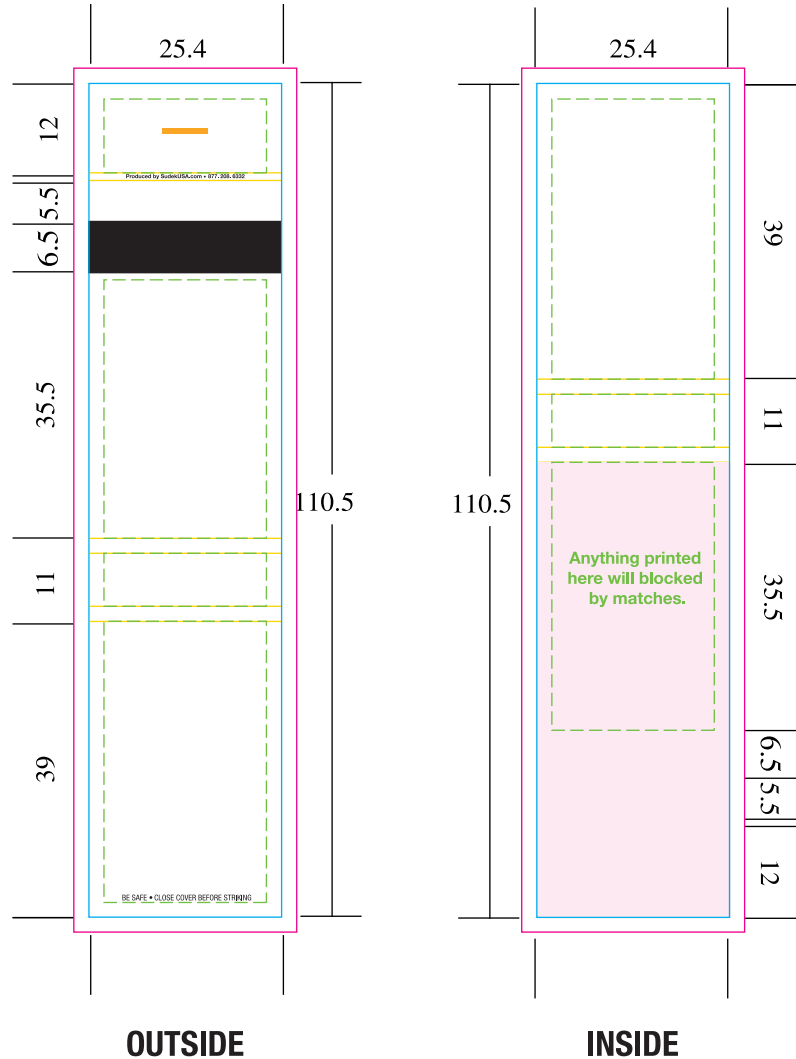
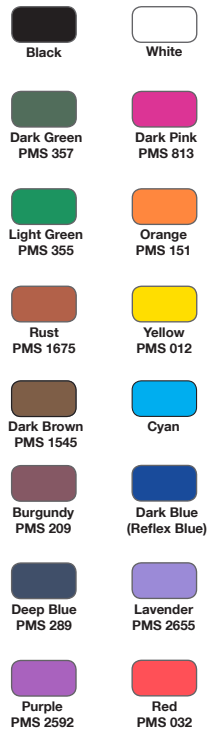


## 12 stem Matchbook 2029 All measurements are in millimeters Inside could be printed for an additional charge

- Bleed
- - - Safe Imprint Area
- Cut Line
- Fold Lines
- Staple

### Approximate stock match tip colors



### List PMS color below / outside

<input type="text"/>	PMS	<input type="text"/>	PMS
<input type="text"/>	PMS	<input type="text"/>	PMS
<input type="text"/>	CMYK		

### List PMS color below / inside

<input type="text"/>	PMS	<input type="text"/>	PMS
<input type="text"/>	PMS	<input type="text"/>	PMS
<input type="text"/>	CMYK		

### Specify match tip color Stem Color

<input type="text"/>	<input type="text"/> Natural
----------------------	------------------------------

### Matchbook Finish

- ☐ 1. Glossy Outside (Coated) - PMS C colors  
Matte Inside (Uncoated) - PMS U colors
- ☐ 2. Matte Outside (Uncoated) - PMS U colors  
Glossy Inside (Coated) - PMS C colors
- ☐ 3. Glossy Side with Matte Varnish  
PMS C colors with Matte Varnish (additional charge)

### IMPORTANT NOTICE:

The colors appearing on this PDF proof are not color-calibrated but represent the colors to be used on press. If there is anything wrong with the colors, do not approve this proof. Please check and double-check this proof: all colors, graphics, copy, punctuation, and spelling. It is only to be approved if all elements of your job are absolutely correct. Final correctness is your sole responsibility. Once you have approved this proof, Sudek USA Inc., will not be responsible for any omissions, oversights, or errors.

DATE:

SIGNATURE:

PRINT NAME:

POSITION: