





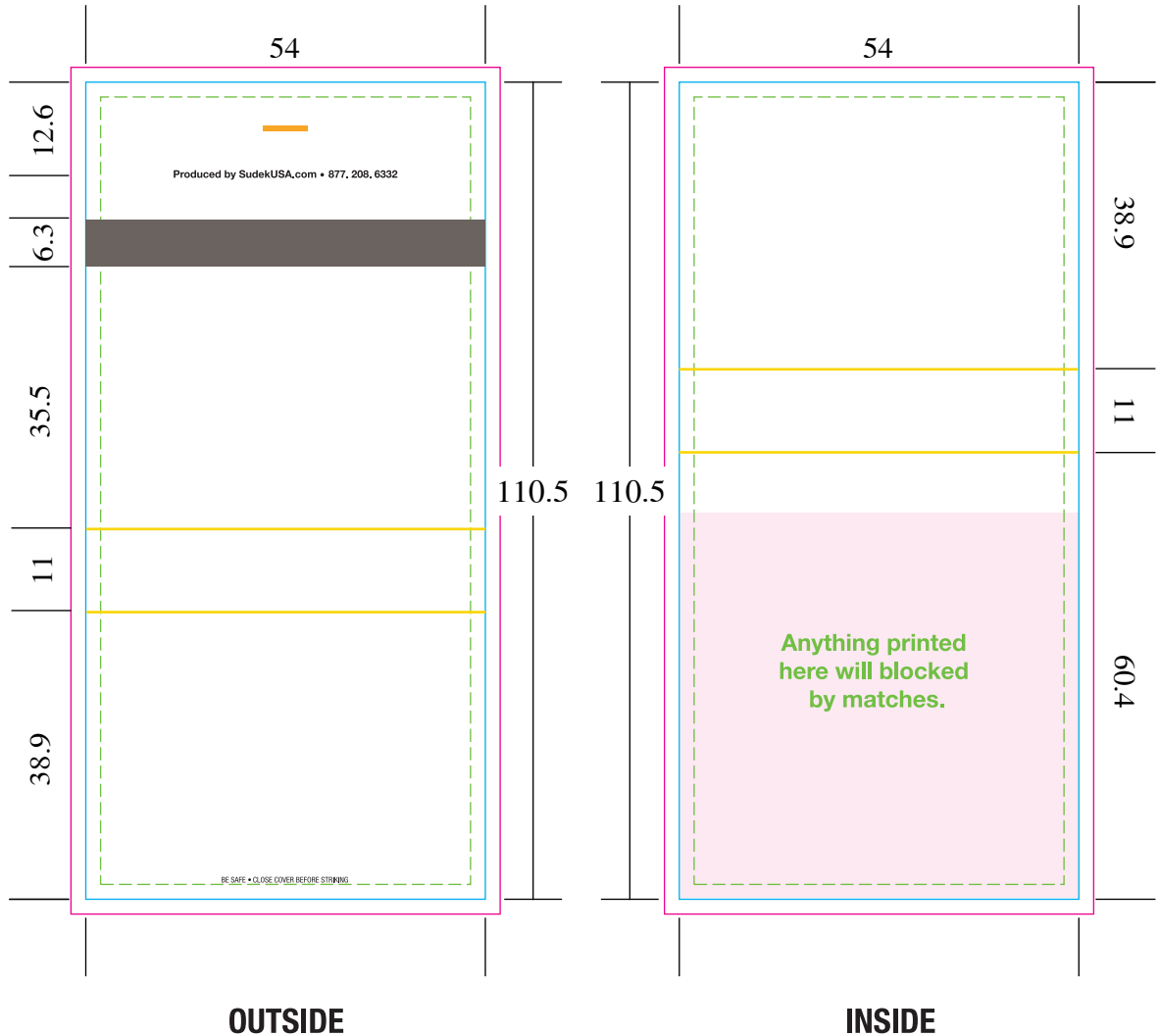


**30 stem Matchbook 2039 All measurements are in millimeters
Inside could be printed for an additional charge**

- **Bleed**
- - - **Safe Imprint Area**
- **Cut Line**
- **Fold Lines**
- **Staple**

Approximate stock match tip colors

- | | |
|--|--|
|  Black |  White |
|  Dark Green
PMS 357 |  Dark Pink
PMS 813 |
|  Light Green
PMS 355 |  Orange
PMS 151 |
|  Rust
PMS 1675 |  Yellow
PMS 012 |
|  Dark Brown
PMS 1545 |  Cyan |
|  Burgundy
PMS 209 |  Dark Blue
(Reflex Blue) |
|  Deep Blue
PMS 289 |  Lavender
PMS 2655 |
|  Purple
PMS 2592 |  Red
PMS 032 |



List PMS color below / outside

<input type="text"/>	PMS	<input type="text"/>	PMS
<input type="text"/>	PMS	<input type="text"/>	PMS
<input type="text"/>	CMYK		

List PMS color below / inside

<input type="text"/>	PMS	<input type="text"/>	PMS
<input type="text"/>	PMS	<input type="text"/>	PMS
<input type="text"/>	CMYK		

Specify match tip color Stem Color

<input type="text"/>	<input type="text"/>	Natural
----------------------	----------------------	---------

Matchbook Finish

- 1. Glossy Outside (Coated) - PMS C colors
Matte Inside (Uncoated) - PMS U colors
- 2. Matte Outside (Uncoated) - PMS U colors
Glossy Inside (Coated) - PMS C colors
- 3. Glossy Side with Matte Varnish
PMS C colors with Matte Varnish (additional charge)

IMPORTANT NOTICE:

The colors appearing on this PDF proof are not color-calibrated but represent the colors to be used on press. If there is anything wrong with the colors, do not approve this proof. Please check and double-check this proof: all colors, graphics, copy, punctuation, and spelling. It is only to be approved if all elements of your job are absolutely correct. Final correctness is your sole responsibility. Once you have approved this proof, Sudek USA Inc., will not be responsible for any omissions, oversights, or errors.

DATE:	
SIGNATURE:	
PRINT NAME:	
POSITION:	