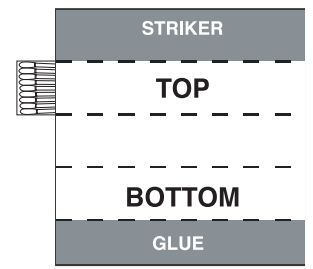
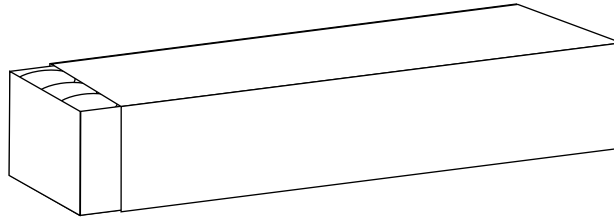


Matchbox Style 1010-3L IN
All measurements are in millimeters

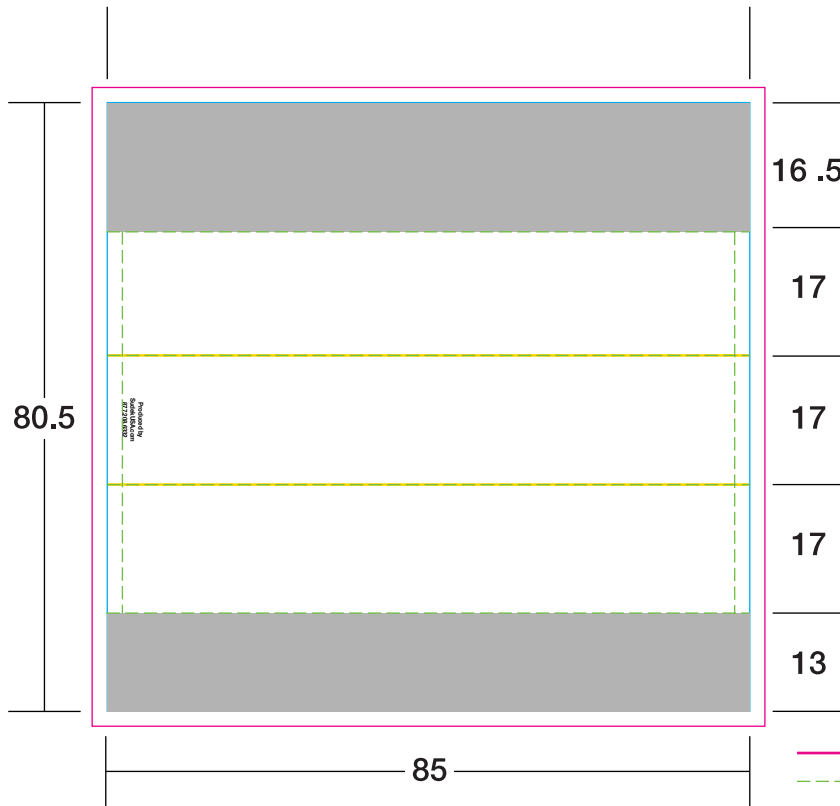


ORIENTATION OF MATCHES

Possible movement of 1 to 2 mm (3/64" to 5/64"), in any direction, during the cutting process.

Approximate stock match tip colors

- Black
- White
- Dark Green PMS 357
- Dark Pink PMS 813
- Light Green PMS 355
- Orange PMS 151
- Rust PMS 1675
- Yellow PMS 012
- Dark Brown PMS 1545
- Cyan
- Burgundy PMS 209
- Dark Blue (Reflex Blue)
- Deep Blue PMS 289
- Lavender PMS 2655
- Purple PMS 2592
- Red PMS 032



Please specify Pantone colors below

PMS PMS CMYK
 PMS PMS

IMPORTANT NOTICE:

The colors appearing on this PDF proof are not color-calibrated but represent the colors to be used on press. If there is anything wrong with these colors, do not approve this proof. Please check and double-check this proof: all colors, graphics, copy, punctuation, and spelling. It is only to be approved if all elements of your job are absolutely correct. Final correctness is your sole responsibility. Once you have approved this proof Sudek USA Inc. will not be responsible for any omissions, oversights, or errors.

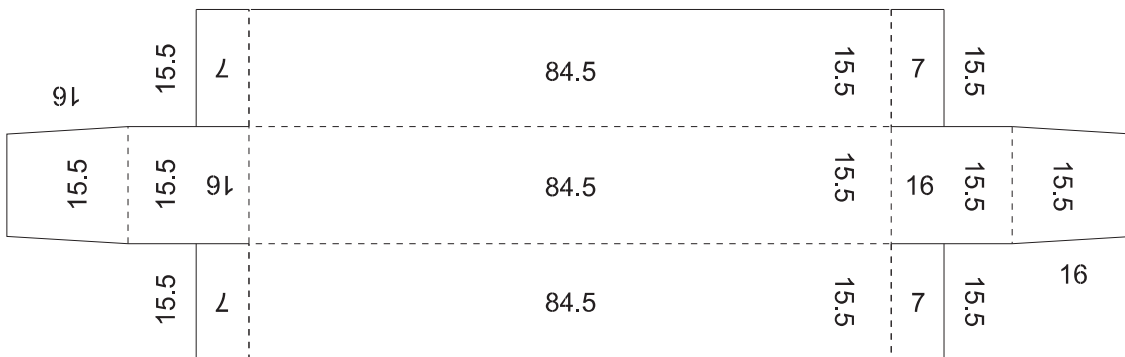
| | |
|-------------|--|
| DATE: | |
| SIGNATURE: | |
| PRINT NAME: | |
| POSITION: | |

List Matchtip color below

Matchbox Finish

- 1. Glossy (Coated) - PMS C colors
- 2. Glossy with Matte Varnish (additional charge) - PMS C colors

Matchbox Style 1010 IN DRAWER at an additional charge printed on two sides
Glossy or matte varnish could be applied only on one side the other side will always uncoated matte



Please specify Pantone colors below

PMS PMS CMYK
 PMS PMS

Please specify Pantone colors below

PMS PMS CMYK
 PMS PMS

Drawer Finish one side

- 1. Glossy (Coated) - PMS C colors
- 2. Glossy with Matte Varnish (additional charge) - PMS C colors

Drawer Finish one side

- 1. Matte (Uncoated) - PMS U colors

Purchase 3 or more different logo products at the same time and receive a 5% discount, order 5 or more products and receive a 10% discount.