



White Kraft Bag 10" x 5" x 13" Size Template with Twisted Paper handles

Please specify Pantone PMS U uncoated / matte colors below

Color selection boxes for PMS colors

Please specify stock color of the bag handles below

Color selection boxes for stock colors: White, Black, Baige (PMS 468 U), natural brown kraft, Red (PMS 186 U), Navy Blue (PMS 289 U)

IMPORTANT NOTICE: The colors appearing on this PDF proof are not color-calibrated but represent the colors to be used on press. If there is anything wrong with these colors, do not approve this proof. Please check and double-check this proof: all colors, graphics, copy, punctuation, and spelling. It is only to be approved if all elements of your job are absolutely correct. Final correctness is your sole responsibility. Once you have approved this proof Sudek USA Inc. will not be responsible for any omissions, oversights, or errors.

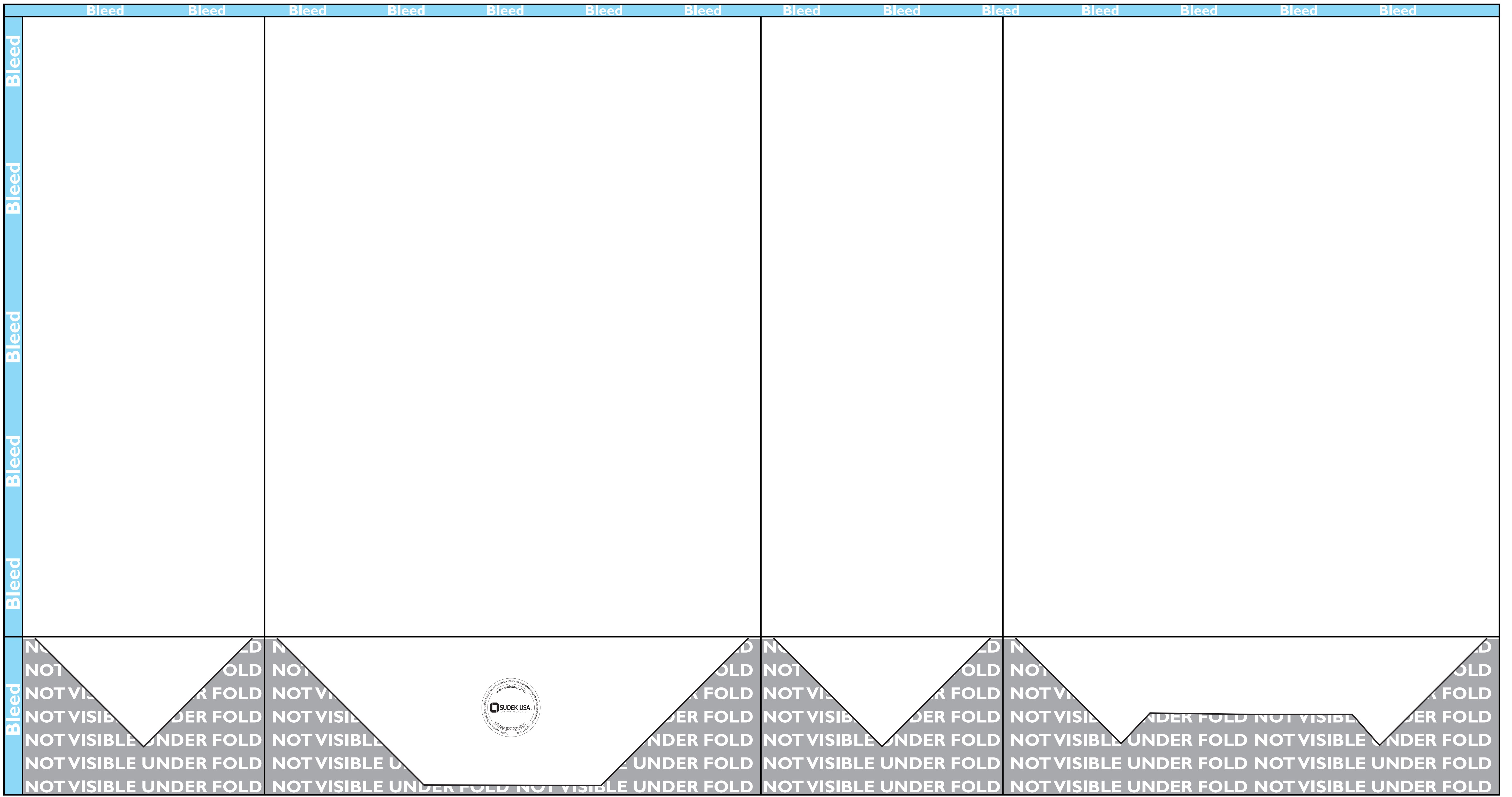
DATE: SIGNATURE: PRINT NAME: POSITION: form fields

Gusset

Front

Gusset

Back



SudekUSA.com



Natural Brown Kraft Bag 10" x 5" x 13" Size Template with Twisted Paper handles

Please specify Pantone PMS U uncoated / matte colors below

Color selection boxes for PMS colors

Please specify stock color of the bag handles below

Color selection boxes for stock colors: White, Black, Baige (PMS 468 U), natural brown kraft, Red (PMS 186 U), Navy Blue (PMS 289 U)

IMPORTANT NOTICE: The colors appearing on this PDF proof are not color-calibrated but represent the colors to be used on press. If there is anything wrong with these colors, do not approve this proof. Please check and double-check this proof: all colors, graphics, copy, punctuation, and spelling. It is only to be approved if all elements of your job are absolutely correct. Final correctness is your sole responsibility. Once you have approved this proof Sudek USA Inc. will not be responsible for any omissions, oversights, or errors.

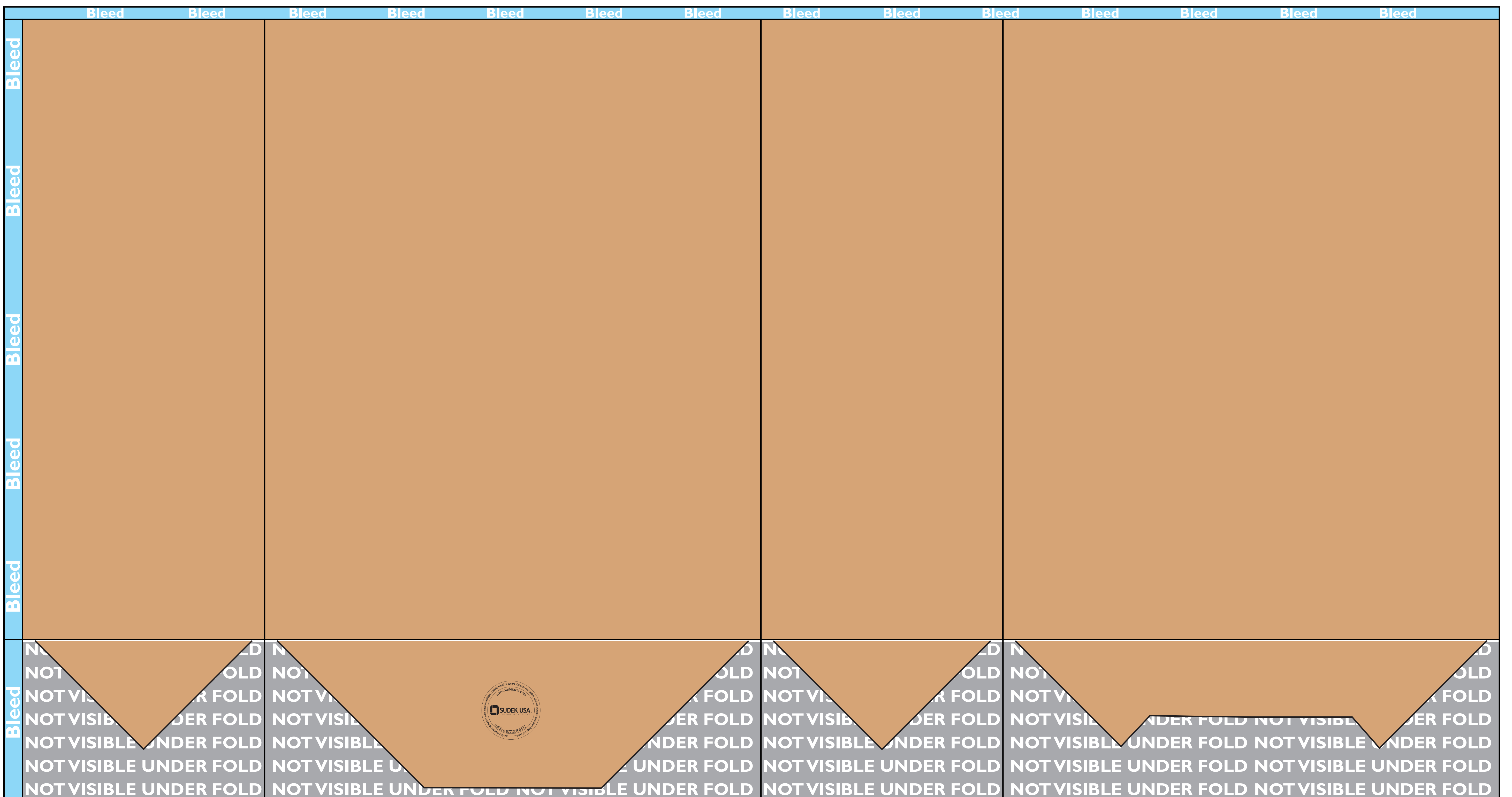
DATE: SIGNATURE: PRINT NAME: POSITION: form fields

Gusset

Front

Gusset

Back



SudekUSA.com