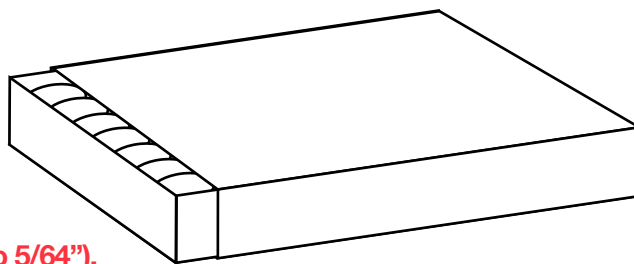


Matchbox Style 1023 IN

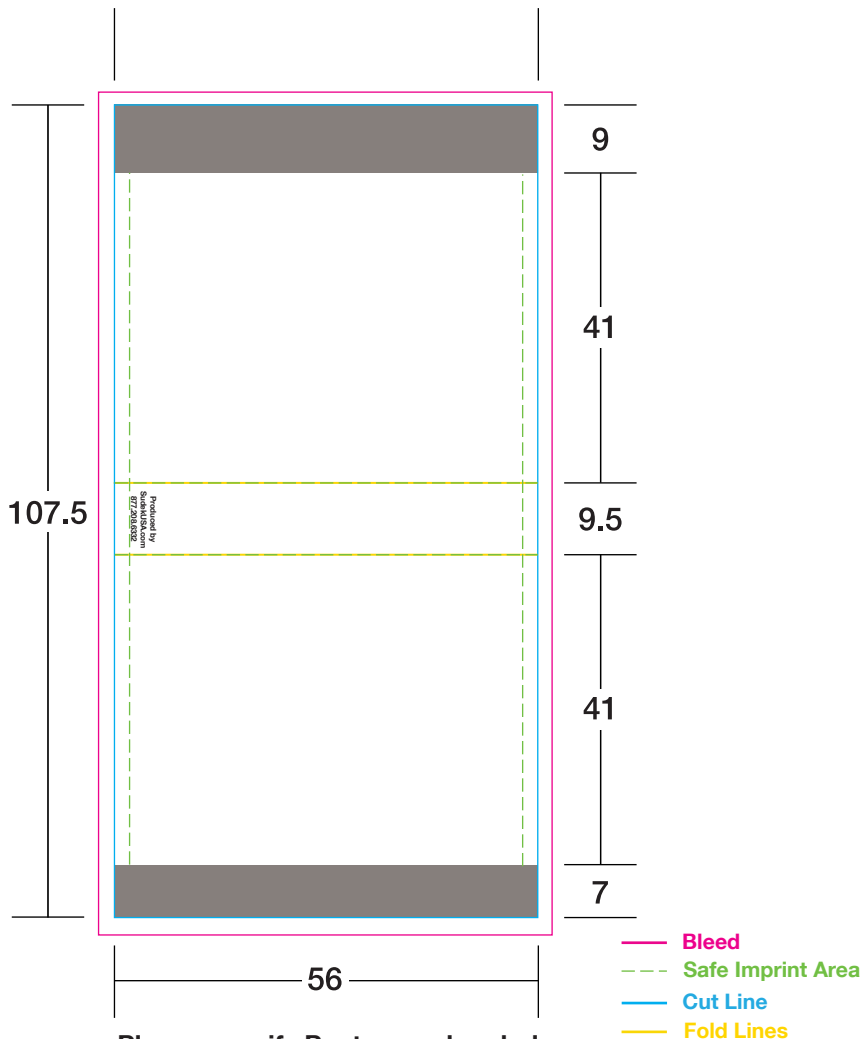
All measurements are in millimeters



Possible movement of 1 to 2 mm (3/64" to 5/64"), in any direction, during the cutting process.

Approximate stock match tip colors

	
Black	White
	
Dark Green PMS 357	Dark Pink PMS 813
	
Light Green PMS 355	Orange PMS 151
	
Rust PMS 1675	Yellow PMS 012
	
Dark Brown PMS 1545	Cyan
	
Burgundy PMS 209	Dark Blue (Reflex Blue)
	
Deep Blue PMS 289	Lavender PMS 2655
	
Purple PMS 2592	Red PMS 032



IMPORTANT NOTICE:

The colors appearing on this PDF proof are not color-calibrated but represent the colors to be used on press. If there is anything wrong with these colors, do not approve this proof. Please check and double-check this proof: all colors, graphics, copy, punctuation, and spelling. It is only to be approved if all elements of your job are absolutely correct. Final correctness is your sole responsibility. Once you have approved this proof Sudek USA Inc. will not be responsible for any omissions, oversights, or errors.

DATE:	
SIGNATURE:	
PRINT NAME:	
POSITION:	

Please specify Pantone colors below

<input type="text"/>	PMS	<input type="text"/>	PMS	<input type="text"/>	CMYK
<input type="text"/>	PMS	<input type="text"/>	PMS		

List Matchtip color below

Matchbox Finish

- ☐ 1. Glossy (Coated) - PMS C colors
- ☐ 2. Glossy with Matte Varnish (additional charge) - PMS C colors

Purchase 3 or more different logo products at the same time and receive a 5% discount, order 5 or more products and receive a 10% discount.