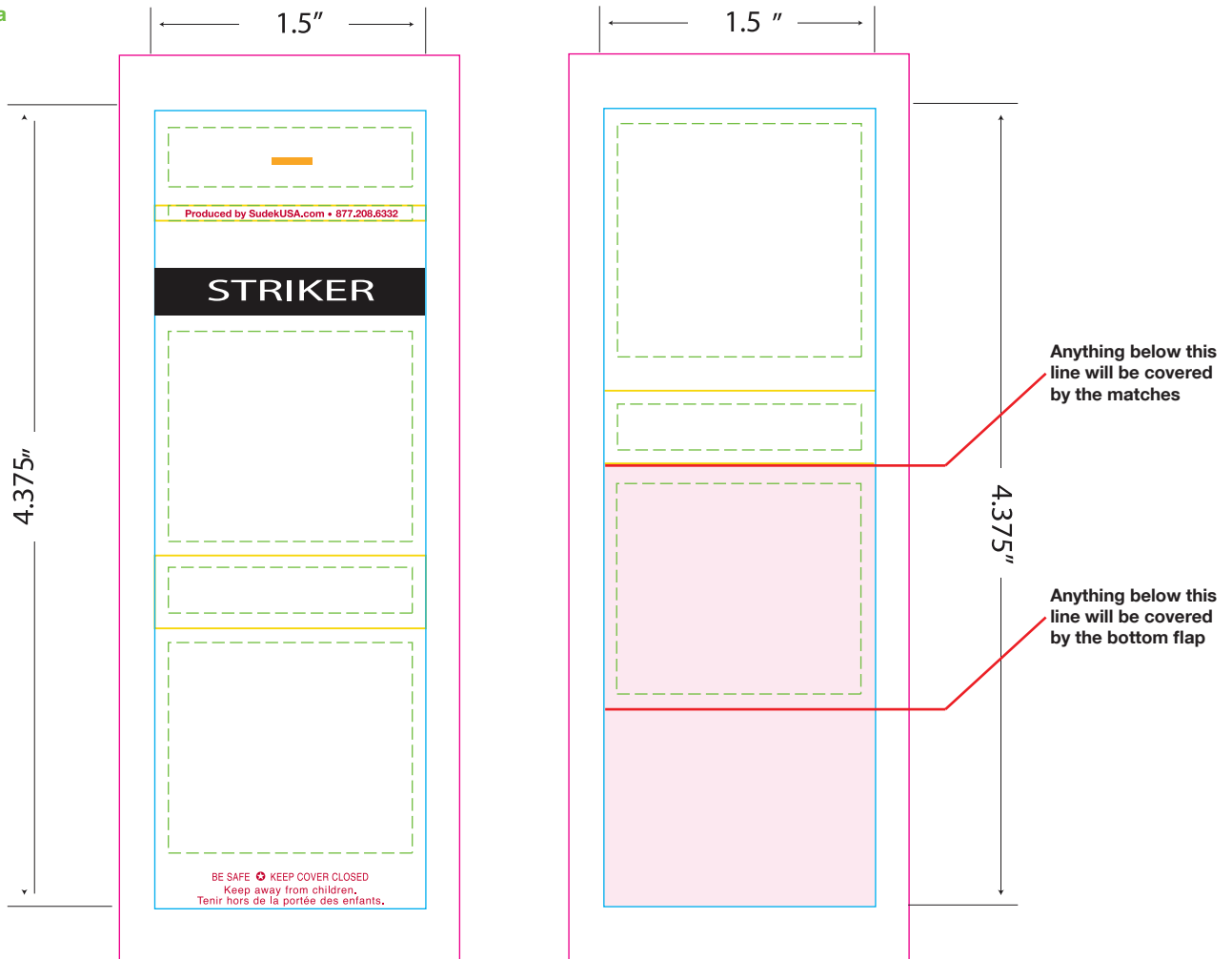


20 stem Stock 2 color Red and Blue Matchbook All measurements are in inches Inside could be printed in Black for an additional charge

- Bleed
- - - Safe Imprint Area
- Cut Line
- Fold Lines
- Staple



List PMS color below / outside

- PMS Stock Red
- PMS Stock Blue

Inside Black only

- PMS Black

Match tip color

- ☐ White

Stem Color

- ☐ White

Matchbook Finish

- ☐ 1. Glossy Outside (Coated) - PMS C colors
Matte Inside (Uncoated) - PMS U colors

IMPORTANT NOTICE:

The colors appearing on this PDF proof are not color-calibrated but represent the colors to be used on press. If there is anything wrong with the colors, do not approve this proof. Please check and double-check this proof: all colors, graphics, copy, punctuation, and spelling. It is only to be approved if all elements of your job are absolutely correct. Final correctness is your sole responsibility. Once you have approved this proof, Sudek USA Inc., will not be responsible for any omissions, oversights, or errors.

DATE:

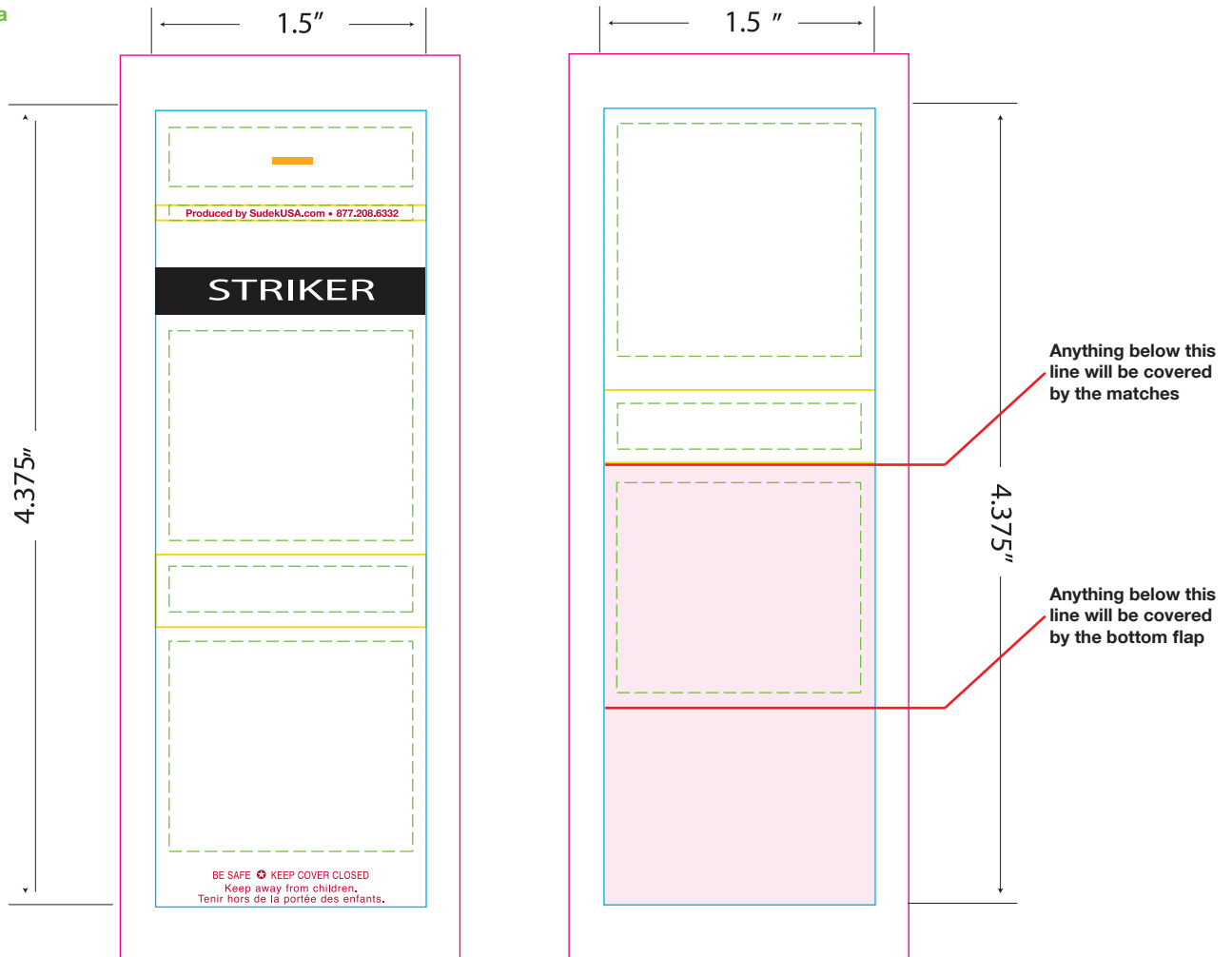
SIGNATURE:

PRINT NAME:

POSITION:

20 stem Stock 2 color Red and Black Matchbook All measurements are in inches Inside could be printed in Black for an additional charge

- Bleed
- - - Safe Imprint Area
- Cut Line
- Fold Lines
- Staple



List PMS color below / outside

- PMS Stock Red
- PMS Stock Black

Inside Black only

- PMS Black

Match tip color

- ☐ White

Stem Color

- ☐ White

Matchbook Finish

- ☐ 1. Glossy Outside (Coated) - PMS C colors
Matte Inside (Uncoated) - PMS U colors

IMPORTANT NOTICE:

The colors appearing on this PDF proof are not color-calibrated but represent the colors to be used on press. If there is anything wrong with the colors, do not approve this proof. Please check and double-check this proof: all colors, graphics, copy, punctuation, and spelling. It is only to be approved if all elements of your job are absolutely correct. Final correctness is your sole responsibility. Once you have approved this proof, Sudek USA Inc., will not be responsible for any omissions, oversights, or errors.

DATE:	
SIGNATURE:	
PRINT NAME:	
POSITION:	